

Company Profile



Laxmi Electricals

(Govt. Approved Electrical Contractor)

LAXMI ELECTRICALS

Address:

Plot No.20,Ambica Nagar,Pedva Wadi,Anjar (Kutchh).370110

Emai:- laxmielectricals87@gmail.com M- 099250 19543

INTRODUCTION

LAXMI ELECTRICALS an Electrical & Instrumentation Construction company in the business of providing Detailed Engineering services, Turnkey Contracts and O&M services in Electrical and Instrumentation discipline for various types of projects in the field of Petrochemical, Chemical, Cement, Textile Plant, Paper industries as well as Commercial Complex and Hotels.

The company has been in this field for carrying out extensively all types of electrification work. The company has a team of highly qualified and professional Engineers, Draughtsman, and Site Supervisors and Skilled personnel to complete the project in desired time schedule and still maintain the highest quality work. The company is headed by **Mr. Rupesh Chotara who is having working experience of 15 years in the field** with various reputed organizations like **Siemens Ltd, Jindal Saw Ltd, ABG Kandla container terminal, welspun, Bhuj Polymer, Aarti industries Ltd. Surya Global Ltd. Ratnamani Metals & Tubes Ltd, Electro Therm, Balkrishna Tyre, shreeyam power Ltd.** prior to initiating this organization. Company profile and reference list for Construction projects is enclosed for ready reference.

We pleased to introduce ourselves as one of the contractor for providing comprehensive and high quality services. We are licensed electrical contractors and are executing Testing and commissioning of switchyards and Substations. We undertake all types of electrical works like Testing and services of Power and Distribution Transformers, HV / LV panels, Scheme Testing etc.

We have expert team to carry out Testing, Commissioning & Maintenance of Various kinds of electrical equipments like MV/ LV Switchgear Panels, protective Relay circuit Breakers & other electrical equipments of different make like Alstom, ABB, L&T, Siemens, ER, LG, GE, Jyoti, etc.

We always emphasize on scrutinizing our customer's need and feed it with our Technical Support. We are assuring you of our best services forever and anticipating long term valuable Business Relations.

Looking forward in to prolong our journey towards the excellence with Co- operation of our valuable client like you.

Thanking you and assuring you of our prompt and quality services at all times.

In addition to the above Company is having an operation and maintenance contract for Cement, Refinery and Petrochemical plants.

The company has been also deputing skilled technical manpower for various Industries in India.

(RUPESH M CHOTARA)
99250 19543
Proprietor

BRIEF DETAILS OF THE COMPANY

- 1.0 NAME OF THE COMPANY : **LAXMI ELECTRICALS**
- 2.0 COMPANY STATUS : Proprietor ship
- 3.0 ELECTRICAL CONTRACT LICENCE NO. : G/KTC/C/1319
- 4.0 OFFICE AREA : 1200 sqft.
- 5.0 ADDRESS : Polt No.20,Ambica Nagar,pedva wadi,Anjar kutchh-3701110
- 5.1 REGISTERED OFFICE : Polt No.20,Ambica Nagar,pedva wadi,Anjar kutchh-3701110
- Mobile :99250 19543
- E-mail :laxmielectricals87@gmail.com
- Branch office : Shop no.1,Yogeshvar chowkdi,
By Pass Road,
Anjar-KUTCHH
GUJARAT – 370 110
- 6.0 OFFICE EQUIPMENTS :
- a) Monitors – 17”-Acer Colour LCD- 6 Nos.
 - b) PC-XP
 - c) Xerox Machine
 - d) Printer
 - e) Scanner
- 8.0 TECHNICAL STAFF IN OFFICE : a) Experience Graduate Engineer (Elec.) - 10Nos.
c) Diploma Engineers (Electrical) - 10 Nos.
- 9.0 SUPPORTING STAFF IN OFFICE : a) Chief Accountant - 1 No.
b) Assistant Accountant - 1 Nos.
c) Typist / Clerk - 2 Nos.
- 10.0 AUDITORS : **M/s. K S Solanki & Associates**
- 11.0 BANKERS : BANK OF INDIA
Savasar Naka,
Anjar,
- 12.0 P.F. Registration No. : GJRAJ1029365
PAN No. : AICPC2136R
- 14.0 Service Tax Registration No. : AICPC2136RSD001
- 15.0 Vat Registration No. : Applied For

AREA OF OPERATION

1.0	SPECIALISATION IN ELECTRICAL FIELD IN ENGINEERING AND CONTRACTING WITH PROJECT JOB.
2.0	PLANT OPERATIONS AND MAINTENANCE / TROUBLE SHOOTING
3.0	LUMPSUM TURNKEY CONTRACTS.
4.0	ANNUAL MAINTENANCE CONTRACTS FOR ELECTRICAL
5.0	TESTING & COMMISSIONING OF ALL TYPE HT/LT PANEL AND ALL TYPES RELAY AND BREAKRES AND TRANSFORMER, SWITCHYARD UP TO 400 KV.
6.0	DEPUTING SITE ENGINEERS, CONTRUCTION ENGINEERS, SKILLED ELECTRICIAN.

ENGINEERING SERVICE

ELECTRICAL POWER SYSTEM STUDY

- Study of existing protection system of plant, suggestions and renovations for plant betterment.
- Recommendations for renovation and revamping switchgears, protective relay and protective schemes.

FAULT LEVEL AND SHORT CIRCUIT CALCULATIONS

- Verification of authenticity of existing switchgear rating as per the, system operating conditions of the plant.
- Fault level calculations can from a guideline for feasibility of existing switchgear for further expansion programmers.

RELAY CO-ORDINATION AND RELAY SETTINGS

- Recommendation of over current and Earth Fault relay settings to achieve proper grading of over current relays and to avoid frequent mal-operation problems if any.

Recommendation for unit protection relay settings based on the equipment data sheets and the protection functions of the existing unit protection relay.

- Recommendations for the change of the type of the existing relay if found improper as per the standard applications.
- The non- availability of the in-avoidable protections necessary as per the standard application of protection for particular electrical equipment is highlighted along with the consequences.
- Physical setting of the relay as per the settings recommended in the report.

ENGINEERING OF PROTECTIVE RELAYING SCHEMES

- Restricted Earth Fault (REF) Protection scheme for Transformers.
- Bus Bar Differential protection schemes.
- Transformer and Generator Differential Protection schemes.
- Protective Relaying scheme for Generator as well as for
- Parallel operation of Generator with Grid or parallel operation of Generators.
- Load Shedding Schemes for prevention of the collapse of in-plant generation under overload condition.
- Modification of HT panel having time limit shunt fuse system into protective relays.

ERECTION, TESTING AND COMMISSIONING SERVICES

OUT DOOR SWITCHYARD ETC WORK

- Pre- commissioning tests for outdoor switchyard equipments (Complete package) like Power and distribution transformer, circuit breaker, CT, PT, NGR, Lightning arrestor, insulator, isolator, Earthing installations equipment as per the design and requirement of system.

DISTRIBUTION SYSTEM ETC WORK

- Pre-commissioning tests for electrical distribution system like HT Switchgears, LT switchgear, Motor control centers, Distribution Transformer, HT/LT bus duct, HT cable, HT/LT Motor ,etc of different make like Siemens, ABB, JYOTI, L&T, CG ALSTOM Etc.

PROTECTIVE RELAYING SCHEMES

- The under listed protection schemes are completely checked and simulated its sensitivity for in – zone fault and stability for fault external to the zone of protection.
 - Generator Differential Protection scheme.
 - Simulation of Generator protective Relaying.
 - Bus bar Differential Protection Scheme.
 - Restricted Earth fault Protection Scheme for transformers.
 - Transformer Differential protection scheme.
 - Directional over current and earth fault relaying scheme.

PLANT BETTEREMENT AND MAINTENANCE SERVICES

RETROFITTING SERVICES

- System study of electrical power distribution system for its performance reliability and efficiency and remedies for betterment of the same by modification renovation and revamping.
- Modification renovation and revamping of LT and HT Switchgear Panel.

MAINTENANCE SERVICES

- Preventive maintenance and testing of outdoor switchyard electrical system equipment.
- Maintenance, overhauling and testing of HT indoor switchgear as well as LT switchgear.
- Annual Maintenance of complete electrical switchgear and protection system as a package contract.

SPECILISED SERVICES ON SIEMENS AND L&T

- We offers round the clock services on SIEMENS And L&T Product.
- Testing-Commissioning Siemens And L&T Switchgear And Protective Relay.
- Maintenance And Servicing HT/LT circuit Breakers.
- Health Check-Up of Siemens And L&T HT/LT Switchgear Panel.
- Maintenance of EHV Breakers Up To 400 KV.
- Trouble Shooting Services for Siemens and L&T Switchgear and Protective Relay Like malfunctioning of protective scheme, unwanted tripping of feeders, malfunctioning of protective relay.
- Retrofitting services to replace existing obsolete switchgear and Protection system by Siemens Switchgear And Protection Systems to keep pace with the latest technology.

OUR ACHEIVEMENTS TILL DATE

- **REMOVING OF OLD (MAKE-NGF) 33 KV PANEL (83 NOS) AND 220 KV CRP (21 NOS) AND INSTALLATION, ERECTION AND TESTING COMMISSIONING OF NEW SIEMENS MAKE 33KV (88 NOS) WITH 220 KV CRP (20) NOS) OF WITHIN 24 DAYS AT JINDAL STEEL LTD DOLVI PEN MAHARASTRA.**
- TESTING AND COMMISSIONING OF MV/LV PANELS. APPROX = 600 NOS.SIPROTEC NUMERICAL RELAYS.
- COMMISSIONING OF 66/132 KV EHV BKR.
APPROX =65 NOS.
- MAINTENANCE OF MV/LV SWITCHGEARS.
APPROX = 450 NOS.
PROG. & PARAM.OF LOOSE SIPROTEC RELAYS.

QUALITY POLICY

We are committed to provide timely quality services for design, construction, testing and commissioning of equipments and other services to our clients.

In particular, we are committed to:

- 1. Customer satisfaction.**
- 2. No compromise on quality.**
- 3. Continuous improvement of quality system.**
- 4. Optimize quality and quality output from men and machineries.**

The management is committed to uphold quality policy by following means.

- 1. Action on customer complaints immediately.**
- 2. Training to employees for switch gear and protection system up to 400 KV**
- 3. Upgrading the tools and tackles.**
- 4. Licensed staff for specific task.**

Health, Safety & Environment Policy

It is the Policy of Laxmi Electricals to give great importance to Health and safety of it's employees in design, construction, operation & Maintenance of all the equipments and facilities.

It is the duty of the management to do everything possible to prevent personal injuries . It is equally duty of every employee to exercise personal responsibility and to do everything to prevent injury to him and others.

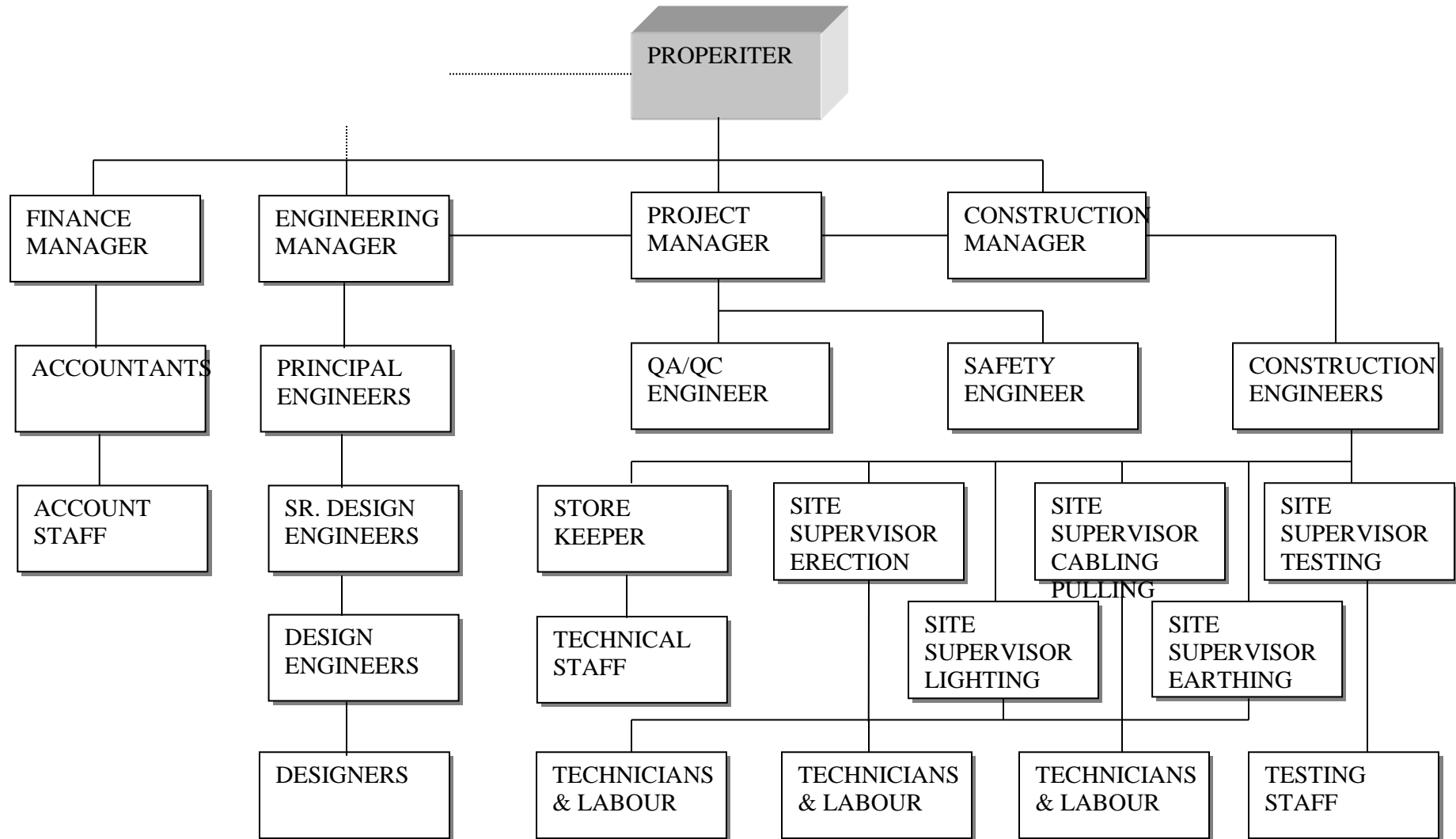
Protection Of environment is of prime concern and important business objective. In Particular, we are committed to:

- **Comply with relevant laws and regulations.**
- **Follow a systematic approach to environmental management plan in order to achieve continual performance improvement.**
- **Prevent pollution, maximize recycle and reduce waste discharges and emissions.**
- **Emphasize every employee's responsibility in environment performance; ensure appropriate operating practices and training.**
- **Promote awareness among contractors, suppliers and customers for shared responsibility towards environment protection.**
- **Ensure licensed persons are working for important talk.**
- **Provide safety ware such as Helmet, Safety Shoes, Gloves, Glasses, Apron, Safety Belt etc. to be field staff**

LIST OF SENIOR EXECUTIVES WITH RESIDENTIAL ADDRESS

	Sr. No.	Name	Designation	Residential Address
	1.	Mr.Rupesh M.Chotara	Proprietor	Plot No.20,Ambica Nagar Pedwa Wadi,Anjar, Kutchh 370110 M-99250 19543
	2.	Mr. Narshi K.Bambhaniya	Chief Executive (Execution , Administration &commercial)	Village :Chandya, Ta.Anjar,Kutchh M-99253 50233
	3.	Dinesh Vaishnav	Project Manager	VPO:- Kurki Dist:- Pali , Rajasthan M-09950811917
	4.	Mr.Niraj M.Chotara	Regional Manager	Plot No.20,Ambica Nagar Pedwa Wadi,Anjar, Kutchh 370110 M-99130 81028
	5	Jiten P. Bambhaniya	Regional Manager	Vijay Nagar, Anjar (Kutch) M-09727764944
	6	Mr. Kalu Ram Hewal	Site Manager	VPO:- Kanuja Pali Rajasthan

ORGANISATION CHART



LIST OF EMPLOYEES

Sr. No.	Name of Staff	Qualification	Experience in Years	Designation
1.	Mr. Dinesh Vaishnaw	Ele. Engg	5 yrs	Project Manager
2.	Mr. Narshi Bambhania	Ele Engg	8 yrs	Chief Ececutive
3.	Mr. Prahladbhai patel	D.E.E.	35 yrs.	Regional Manager
4.	Mr. Niraj Chotara	D.E. Elec	12 yrs.	Sr. Executive
5.	Mr. Jiten Bambhania	ELEC ENGG	4 yrs.	Sr. Engineer
6.	Mr. Sunil Hadia	DEE	6 yrs.	Electrical Engineer
7.	Mr. Rajen Bambhania	M. B. A.	6 yrs	BDM
8.	Mr. Kishor Pedva	DEE	6 yrs.	Engineer
9.	Mr. Chirag Chotara	D.E.E.Elec.	1 yrs.	Slite supervisor
10.	Mr. Ashvin godharasania	DEE ELECT	6 yrs.	Site Supervisor
11.	Mr. Dayaram sorathiya	DEE	7 yrs.	Electrical Engineer
12.	Mr. Rajusingh	I T I	5 yrs.	Electrician
13.	Mr. Premsagar	I T I	5 yrs.	Electrician
14.	Mr. Kaluram	I T I	25 yrs.	Supervisor
	Skilled Technician	as per requirement		
	Unskilled Labours			

LIST OF CONSTRUCTION TOOLS & TACKLES

Sr. No.	Description	Qty.
1.	Welding machines and accessories	
	a. Welding generator Advani make (K-320)	5 Sets
	b. Air cooled welding transformers – 400 Amp.	04 Sets
	c. Gas cutter	03 Sets
2.	Heavy – duty chain blocks with 15 meter lift	
	a. 10 Ton capacity	01 Nos.
	b. 05 Ton capacity	03 Nos.
3.	Drill Machines	
	a. Wolf make light duty drill up to 25mm	03 Nos.
	b. Wolf make light duty drill up to 12mm	04 Nos.
	c. Wolf make light duty drill up to 06mm	8 Nos.
4.	Pipe bending machine up to 3” capacity	01 Nos.
5.	Portable hand tools machines	
	a. Bench grinder	02 Nos.
	b. KPT portable angle grinder	02 Nos.
	c. Hydraulic jacks 20 Tons	02 Nos.
	d. Hydraulic jacks 10 Tons	02 Nos.
	e. Screw jacks 20 Tons	02 Nos.
	f. Screw jacks 10 Tons	1 Nos.
6.	Spanner Set D/E	Lot
7.	Insulated Pliers	Lot
8.	Slide Cutter	Lot
9.	Nose Pliers	Lot
10.	Monkey Spanner	Lot
11.	Hacksaw	Lot
12.	Hammer 5lb	Lot
13.	Hammer 10lb	Lot
14.	Grinders	Lot

: 2 :

Sr. No.	Description	Qty.
15.	Manila Rope – 35M (1', 2", 1)	Lot
16.	Wooden Ladder	20 Nos.
17.	Drill Machine, Portable, Hammer with drill bits.	10 Nos.
18.	Line Tester	5 Nos.
19.	Megger 5000V / 1000V / 500V	3 Nos.
20.	Earth Tester 3 probs	2 Nos.
21.	Crimping Machine, Hydraulic Type, Hand Crimping Type	4 Set
22.	Oil Testing Kit (*)	1 No.
23.	H.V. Testing Kit	1 Nos.
24.	Phase sequence meter	2 Nos.
25.	Micro-ohm meter	1 No.
26.	DC source for voltage drop test	1 No.
27.	Clip-On meter	2 Nos.
28.	Multimeter	15 Nos.
29.	Phase shifter	1 No.
30.	Test plugs	2 Sets
31.	Hi-Pot tester (70kV) (*)	1 No.

Note : (*) - Indicate on lease basis.

List Of Electrical Services

Sr. No.	Name & Adress Of Client	Brief Description Of work Executed
1.	<u>Jindal Steel Ltd Dolvi raighd Maharastra With Siemens Ltd</u>	33kv HT panel and 220 kv CRP Removing, new Siemens make 33 kv HT and 220 kv CRP panel erection, installation and commissioning in their 24 days capital shutdown.
2.	<u>Jindal Saw Ltd., sama goga, Kutch, Gujarat</u>	LT/HT Cable laying, equipment erection, four pole structure, earthing etc.
3.	Adani power Ltd. MUNDRA (Maranatha Enggeniaring.)	HT Cable Laying, Earthing, Lighting, Street Lighting & aviation lighting
4.	Aarti industries limited, BHACHAU	Equipment Erection, Cable Laying, Earthing, Lighting, Street Lighting & aviation lighting, instrumentation job
5.	Surya Global Steel Tubes Limited, Anjar	11 KV END TERMINATION KIT & CABLE LAYING
6.	VVF Limited, Anjar	Supply and erection of MCC Panel.
7.	Bhuj polymer pvt.ltd., mundra	Supply and erection of 150 KVAR Cap Panel.
8.	<u>Ratnamani Metals & Tubes Ltd, Kutch, Gujarat (with Bhagavati elect.)</u>	<u>Plant Electrification - Panel Erection, Transformer Erection, HT & LT & control cable work & termination, Electical & Instrument Cable tray. Earthing network</u>
9.	<u>Surya Global Steel Tubes Ltd, Kutch, Gujarat (with Bhagavati electrical)</u>	<u>Panel Erection, Transformer Erection, HT & LT & control cable work & termination, Electical & Instrument Cable tray. Earthing network</u>
10.	<u>ABG Kandala Container Terminal Ltd, Kutch (with Bhagavati electrical)</u>	<u>Installation, Testing & Commisioning of 11KV HT Breakers, HT & LT Cables, Lighting Fixtures & Accessories,</u>
11.	<u>IPCL, Vadodara, Gujarat (with Bhagavati electrical)</u>	<u>Panel Erection, Transformer Erection, HT & LT & control cable work & termination, Electical & Instrument Cable tray. Earthing network</u>
12.	<u>Lubrizol Advance Chemical India Pvt Ltd at Dahej Gujrat (With Siemend Ltd)</u>	<u>Erection installation and Testing, commissioning of 11 kv Switch Board, PCC, MCC and Lighting Panel</u>

12.	<u>Jindal Saw Ltd., Bhilwada , Rajasthan</u>	<u>Plant Electrification - Panel Erection, Transformer Erection, HT & LT & control cable work & termination,Electical & Instrument Cable tray.Earthing network</u>
13.	<u>Sidhhivinayak Cement Plant,Rajasthan.(with BEC Co.)</u>	<u>Electrical installation , Erection, testing & commisioning of transformers HT & LT panels, Cable Laying & Associate works</u>
14.	<u>Krishna Oliyo chem. india ltd.,</u>	<u>Power Plant Electrification Work, Panel Erection, Transformer Erection, HT & LT & control cable work & termination,Electical & Instrument Cable tray.Earthing network</u>

List of Our valuable clients

Sr.	Project/Name of client
1	ABG Kandla container terminal ltd.,
2	Surya Global Steel Tubes limited
3	Jindal Saw limited Samaghogha
4	Jindal saw limited Nanakapaya
5	Jindal saw limited Bhilavada
6	IPCL BARODA (RIL)
7	Ratnamani Metal & tubes ltd,kutchh
8	Adani power ltd. ,Mundra
9	VARASANA ISPAT LIMITED
10	Anu Shakti Chemicals & Drugs Ltd
11	Aarti industries limited
12	Bhuj Polymer pvt ltd .
13	VVF Limited
14	Krishna oliyo chem. limited
15	Siemens Ltd
16	Jindal Steel Ltd Dolvi Raigad Maharastra

With Best Regards

For Laxmi Electricals

Rupesh Chotara